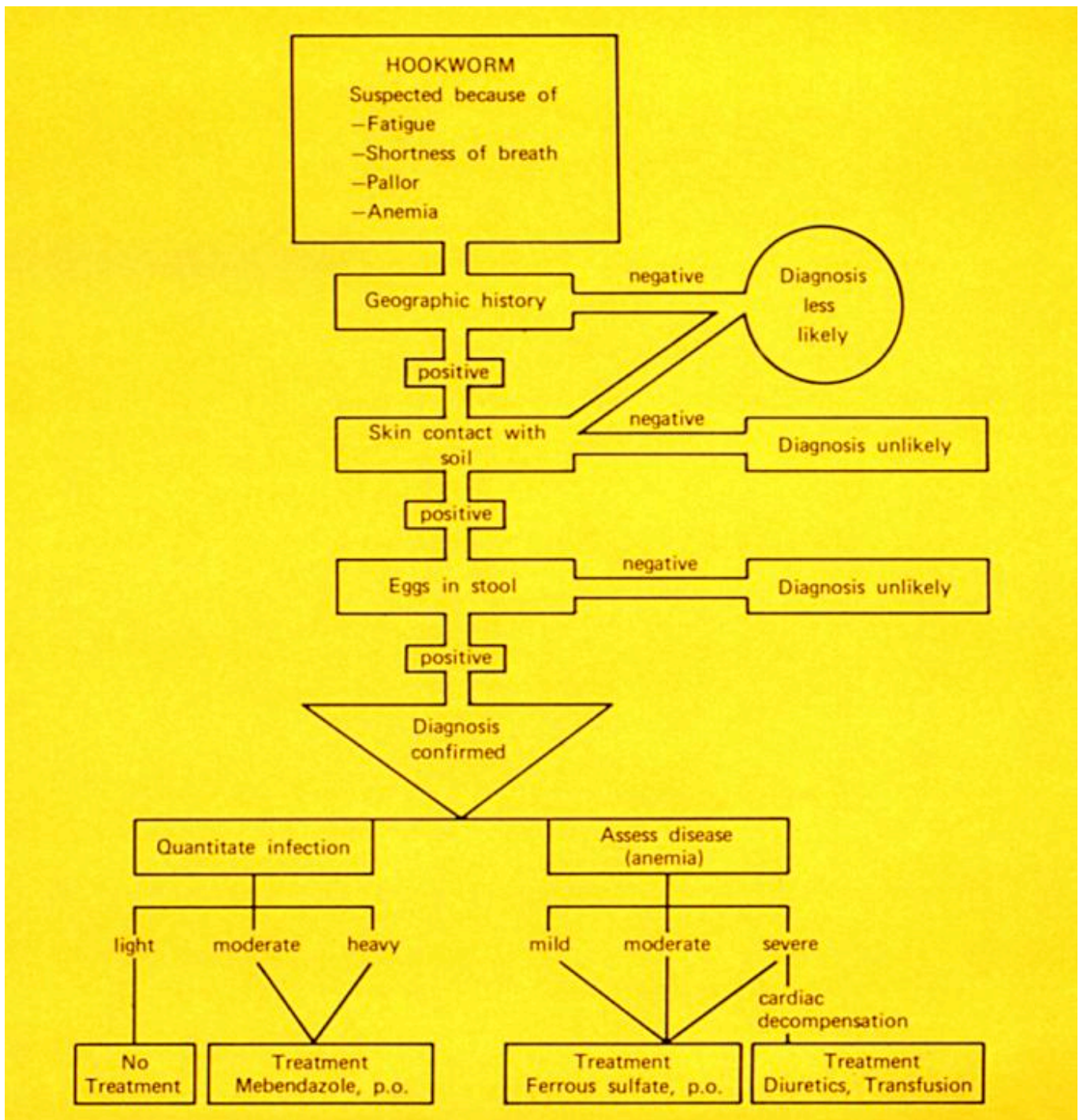


Centers for Disease Control and Prevention



This diagram represents the algorithm that is implemented when diagnosing a hookworm infection. To locate the diagram, go to the Public Health Image Library (PHIL) Quick Search Page:

<http://phil.cdc.gov/phil/quicksearch.asp>

and enter “hookworm diagnostic algorithm” into the search box. This will return image ID#:5245.

Click on the image thumbnail to expand it.

Note that when the infection is “light” (bottom left hand side of diagram) the recommendation is for “No Treatment”. Only “light” infections are used in helminthic therapy.